

**EQUIPMENT CABINET  
DESIGN, FABRICATE & SUPPLY**

CONTACT: [info@meba.com.my](mailto:info@meba.com.my)

# DUAL BAY CABINET



<b>SPECIFICATION</b>	
<b>DIMENSION</b>	1500mm (W) X 846mm (D) X 1700mm (H)
<b>FEATURES</b>	<ul style="list-style-type: none"> <li>✓ Outer panel made of Aluminium.</li> <li>✓ Inner structure is made of mild steel.</li> <li>✓ Protection: IP55</li> <li>✓ Finishing: Epoxy Powder Coating (wrinkle)</li> <li>✓ Its come with security belting.</li> <li>✓ 19' mounting bracket</li> <li>✓ 4 centrifugal fan – provide sufficient air cool.</li> <li>✓ Customize control card to control the speed of fan.</li> <li>✓ Washables filter c/w aluminium frame</li> <li>✓ Door light – DC type</li> <li>✓ Lock c/w swing handle</li> <li>✓ Inlet to connect with feeder system/fiber.</li> <li>✓ Standard packaging</li> </ul>



**Dual Bay Cabinet – Front & Back View**



**Dual Bay Cabinet – Internal View**



**Dual Bay Cabinet – Rear View**

## RRU CABINET



SPECIFICATION	
DIMENSION	750mm (W) X 744mm (D) X 1700mm (H)
FEATURES	<ul style="list-style-type: none"> <li>✓ Outer panel made of Aluminium.</li> <li>✓ Inner structure is made of mild steel.</li> <li>✓ Protection: IP55</li> <li>✓ Finishing: Epoxy Powder Coating (wrinkle)</li> <li>✓ Its come with security belting.</li> <li>✓ Customize mounting bracket – hold RRU units</li> <li>✓ 2 centrifugal fan – provide sufficient air cool.</li> <li>✓ Customize control card to control the speed of fan.</li> <li>✓ Washables filter c/w aluminium frame</li> <li>✓ Door light – DC type</li> <li>✓ Lock c/w swing handle</li> <li>✓ Inlet to connect with feeder system/fiber.</li> <li>✓ Standard packaging</li> </ul>



**RRU Cabinet – Front View**



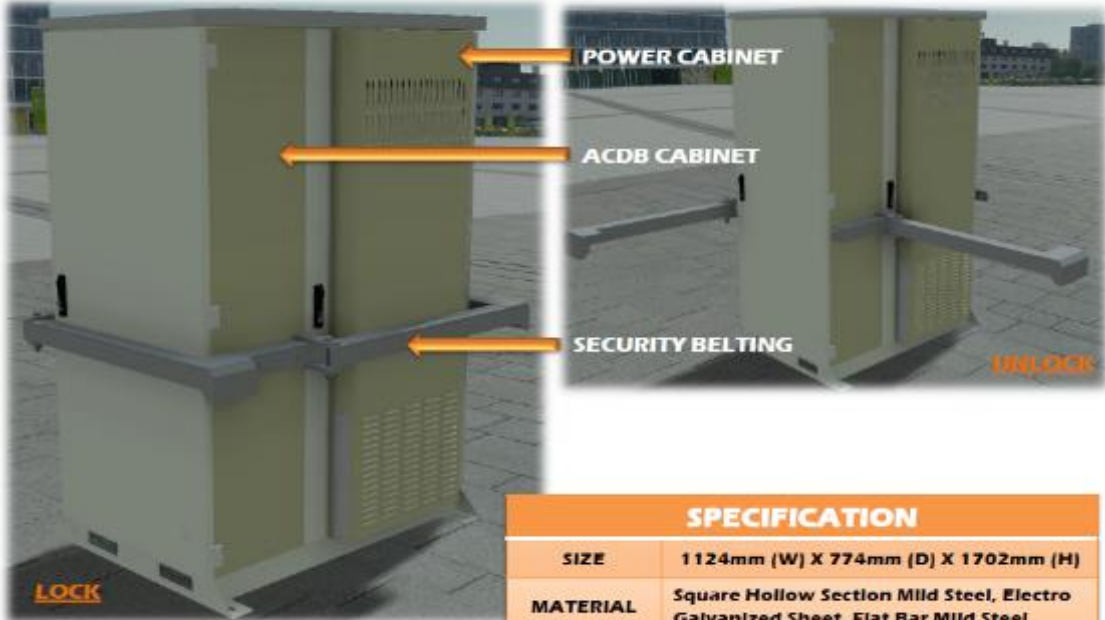
**RRU Cabinet – Side View**



**RRU Cabinet – Side View**

# EQUIPMENT CABINET

## SECURITY BELTING FOR POWER CABINET C/W ACDB



SPECIFICATION	
SIZE	1124mm (W) X 774mm (D) X 1702mm (H)
MATERIAL	Square Hollow Section Mild Steel, Electro Galvanized Sheet, Flat Bar Mild Steel
FINISHING	POWDER COATED



Equipment Cabinet – Front View



**Equipment Cabinet – Side View**

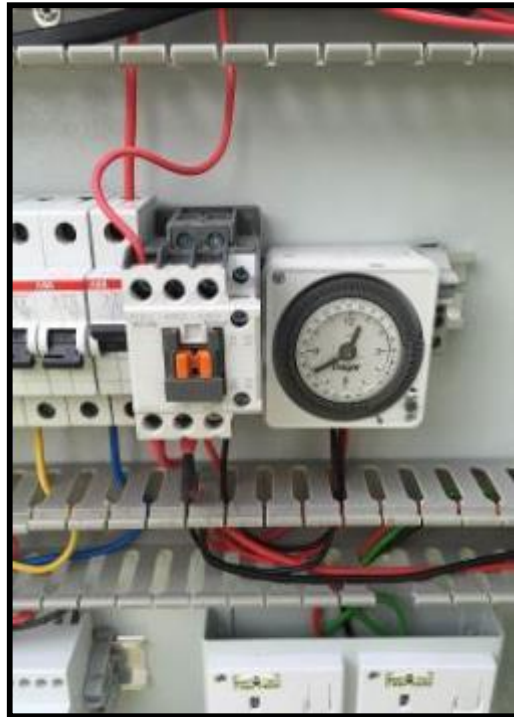


**Equipment Cabinet – ACDB View**



**Front View**

## DUAL BAY CABINET DEPLOYED



# EQUIPMENT CABINET DEPLOYED





UNIT NO.1-2-8 (SUITE 8)  
JALAN PUTERI 1/7, BANDAR PUTERI  
47100 PUCHONG, DARUL ESHAN SELANGOR

+603 5888 4059